



**BURTON
SAFES**

THE SURE DEFENCE

Physical Security Solutions

High Security Guide

ISSUE 1 | 2021

THE SURE DEFENCE	3	Key Safes & Cabinets	
LPCB Explained	4	Keyguard Combi	30
		Keyguard Digital	31
		Keyguard Digital XL	31
Panic Rooms		Heavy Duty Key Cabinets	32
Embassy Modular - Security Rooms	6	KG Keyguard Key Safes	32
Talos Walling	8	KMS Intelligent Key Cabinets	33
Avertic Armour	9		
Security Doors		Retail Safes	
Janus Security Doors	10	Till Safes	36
Kronos Security Doors	12	Teller Deposit	36
		Cashguard Vehicle Safes	37
Grilles & Bar Sets		Eurovault Aver Deposit Grade 1	37
Ajax Grilles & Cages	14	High Security Deposit Safe Grade 2	38
Typhon Bar Sets	14	High Security Deposit Safe Grade 3	38
Strongrooms		Safe Security Standards	39
Transporta Strongrooms	15		
Orthrus Strongrooms	16	High Security Safes	
		Eurovault Aver Grade 0	42
Vaults		Eurovault Aver Grade 1	43
Cerberus Vaults and Doors	18	Eurovault Aver Grade 2	44
		Eurovault Aver Grade 3	45
Deposit Boxes		Eurovault Aver Grade 4	46
Shanghai Safe Deposit Boxes	20	Eurovault Aver Grade 5	47
Vienna Safe Deposit Boxes	22	Eurovault Atlas Grade 6	48
Vaduz Safe Deposit Box System	24	Eurovault Atlas Grade 7	49
Zurich Safe Deposit System	26	The Luxury Range	50
Associated Security Products		Safe Locks	52-53
Security Window Counters	27	Kaba Axxessor USB	54
Security Doors	27	Insys flex ID	54
Interlocks and Access Control Systems	27		
Commercial Sanitiser Unit	27	Safe Locks Terminology	55
Cash Trolleys	27		

THE SURE DEFENCE

Physical Security Solutions

From the world's most advanced safe deposit centres in Hong Kong, to securing cash, bullion and valuables in banks and retailers across Europe and the Middle East; the team at Burton Safes have the experience to advise, design and deliver physical security solutions to protect you and your assets.



The High Security team have over 85 years' worth of security industry experience and are qualified in security design and consultancy. Dedicated account and project managers ensure an unrivalled customer experience.



Burton Safes core principle is to ensure products are tested to the highest standards. We are proud to have tested products to LPCB standards and feature in RedBookLive.



Burton Safes delivers
The Sure Defence



LPCB EXPLAINED

LPCB certification is recognised by insurers, consultants, architects and risk managers across the globe.



Products that are tested to LPCB standards can reduce liability for our customers because of the demonstrated due diligence that having a product certified provides.

Products are rigorously assessed in order to achieve certification. Testing and evaluation makes up an early part of the process, followed by auditing the factory production to ensure high standards are maintained.

Once the product is successfully certified, it is then listed on [RedBookLive](#). It is here that our products are seen by specifiers to verify the status of our tested products.

Once a product has been certified, continuous audits are carried out to ensure that certification is maintained.



Product	Standard	Rating	Certification
PANIC ROOMS AND WALLING			
Embassy Panic Rooms	-	-	-
Talos	LPS1175 Issue 6	SR2, SR3 and SR4	LPCB
Avertic	-	-	-
SECURITY DOORS			
Janus	EN1627	RC3 and RC4	Istituto Giordano
Kronos	LPS1175 Issue 7	SR2, SR3 and SR4	LPCB
GRILLS AND BAR SETS			
Ajax	-	-	-
Typhon	LPS1175 Issue 7	SR2 and SR3	LPCB
VAULTS AND STRONG ROOMS			
Transporta - SC10 & SC20	SS 3492	SS 3492	SSF/SBSC
Transporta - SC800, SC3000 & SC6000	EN1143-1	Grade 3	SSF/SBSC
Orthrus	LPS1175 Issue 8	F10 (SR6) G5	LPCB
Cerberus	EN1143-1	Grade 1 to Grade 13	ECBS





Our Embassy Modular Panic Rooms and safe areas are typically designed for:

- Private Residences
- Schools
- Hotels
- Offices
- Embassies
- Jewellers
- Listed Buildings



Embassy Modular Security Rooms

Our High Security modular rooms and walling systems combined with a choice of armoured high security doors provide the perfect solution for building secure rooms to protect valuables, critical data or create custom designed safe rooms to protect your family.

With over 30 years experience designing physical security solutions for banks, cash in transit companies, ATM deployers, safe deposit centres and the largest retail companies, we are one of the few UK security companies that can offer the full Turnkey service in-house with our own R&D CAD, design and manufacturing team, surveyors, dedicated project managers and fully trained installation engineers.

Your privacy and security matter to us...

Tailor made to meet our client's budget, installation deadlines and provide the highest possible protection, we can design and build a stand-alone room solution for any building or retro fit within an existing room where weight and space are normally an issue.

Our Embassy Modular Security Rooms are typically designed for:

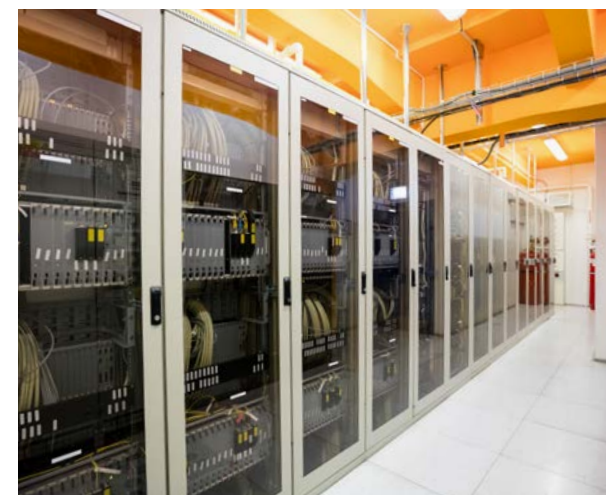
- Healthcare
- Pharmaceuticals and Laboratories
- Warehousing
- Arts and Museums
- Luxury and High Value Goods
- Critical National infrastructure
- Data Centres
- Military
- Gun Storage
- Retail
- Utilities
- Nuclear
- Battery Storage
- Transport
- ATM Rooms and Banking
- Safe Deposit Centres
- Cash Handling

For larger commercial secure storage please see our range of Transportable Strongrooms, the freestanding Orthrus Strongroom certified by LPS to F10 G5 (SR6) and our larger freestanding Cerberus vaults certified to EN1143-1 Grades 1 to 13.



Why choose Embassy Modular Security Rooms and The Sure Defence team?

- Award-winning Security Team
- Industry Leading Design and Manufacturing
- Most Competitive Pricing
- Fastest Lead Times in the Industry
- ISO 9001 Certified Company by LPCB
- Dedicated Sales Manager
- Experienced Survey Team
- In-house CAD Design Team
- Dedicated Project Manager
- Dedicated Installation Manager



Key Features and Available Options:

- Lightweight Modular Panels Suitable for Upstairs Locations
- Talos Walling - Independently Attack Tested to LPS1175 SR2, SR3, SR4 and SR5
- Kronos High Security Doors - Independently Attack Tested to LPS1175 SR2, SR3 and SR4
- Janus Armoured Security Doors - Independently Attack Tested to EN1627 RC3 and RC4
- Hidden Doors
- Access Control Systems
- Anti-drill Protection
- Anti-cut Protection
- Ballistic Protection
- Fire Protection
- Energy Efficiency
- Thermal and Sound Insulation
- Water and Wind Resistance
- Flood Protection

Associated Security Products:

- High Security and Luxury Safes
- Key Management Systems
- Biometrics Locks
- Key Locks
- Security Doors
- Grilles and cages
- Bar Sets
- Gates
- Vision Panels
- Ballistic Glazing
- Security Shutters

When everything else fails Physical Security remains at the heart of protecting your family and valuables.



Talos Walling



- Built to a Police Preferred Specification
 - Secured by Design
- Create a secure room separate from or within an existing property
- Can be used in residential or commercial properties for panic rooms and secure enclosures
- Models with independent testing to LPS1175 SR2 - SR5
- Special lightweight systems allow use in upstairs locations
- Different systems available to suit different risks and budgets
- Optional ballistic protection certified to EN1522/23 FB2 - FB6
- Optional fire protection up to 4 hours
- Can be used for storage of source materials as required by the Environment Agency

Panel Model	Panel Thickness	Weight p/m2	Max Ceiling Span*	Fire Rating Integrity / Insulation
SR2	100	40kg	5500	144min / 30min
SR3	100	45kg	5500	144min / 30min
SR4	100	60kg	5500	240min / 90min
SR5	100	95kg	3500	84min / 84min
FB6	146	135kg	Project specific	240min / 90min

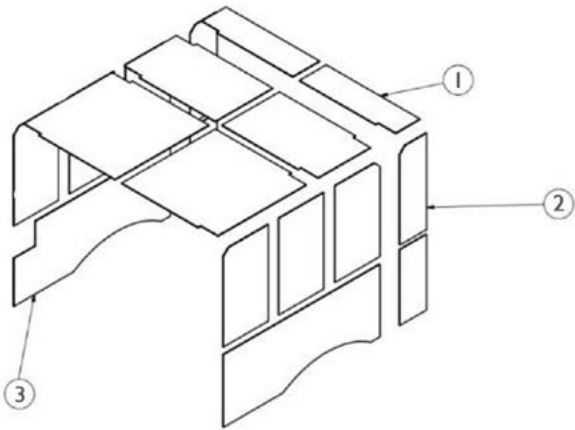
*Without supports



- Designed to withstand attacks from drills, chainsaws, reciprocating saws, concrete cutters and grinders
- Increase the security of armoured vehicles, security walls, security doors, safe rooms, safes, roller shutter and many more security solutions
- Can be used in domestic or commercial properties
- Panels can be cut to any size or shape to meet your requirements
- Space saving solutions as panels are only 5-10mm thick
- Minimal weight increase with panels at just 1 - 1.5kg/pm2
- Easy to apply, and install
- Can be installed as part of manufacture or as a retro fit solution
- 4 different security levels to suit your security needs

Avertic Armour

Avertic Armour is a highly advanced, state of the art security panel providing ultra-light and effective protection against a range of power tools. It's unique properties allow it to be used across many security solutions such as cash-in-transit vehicles, panic room construction, military out buildings, secure room dividers, roller shutters and many more.



Example of vehicle panel construction

Example of secure room wall construction

The Avertic Armour Panel is available in 4 different security levels:

Anti-Drill

Contains 8 layers of protective material and provides 18V drill protection

Power

Contains 6 layers of protective material and 2 layers of the anti-cut material. It can provide protection against a concrete cutter, chainsaw and 800w grinder

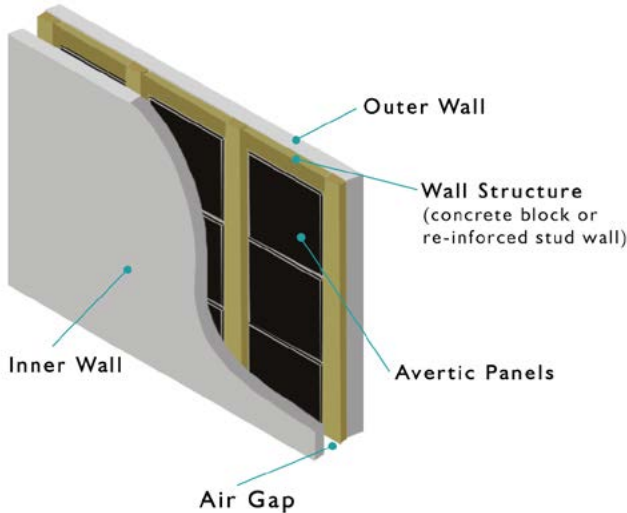
Power +

Contains 4 layers of protective material and 4 layers of the anti-cut material. This product protects against a 1100W grinder, reciprocating saw, concrete cutter and chainsaws

Extreme

The most secure level of this product, contains 2 layers of protective material and 6 layers of the anti-cut material. This level protects against a 2300W grinder, reciprocating saw, concrete cutter and chainsaws

Tailored versions are available to suit security requirements





Janus Security Doors

Water Resistance

Fire Rating

Thermal Insulation

Ballistic

Eco Friendly

- High security door for homes, offices, banks and prestigious or listed buildings
- Independently attack tested to EN1627 RC3 - RC4
- Custom made to suit your property
- A range of fittings and door furniture available
- High environmental performance - Industry leading energy efficiency
- Superb thermal and sound insulation
- External models offer high levels of air tightness, water resistance and wind resistance
- Choice of key or electronic locking
- Special subframe to aide installation, increase security and can give additional thermal insulation on request
- Security glazing available on request
- Bullet resistance available on request
- Emergency and panic hardware available on request

Locking Options

Single Key

Pin

Biometric



Door Model	Janus 3	Janus 4	Janus Fire	Janus 3ex	Janus 4ex	Janus Gold	Janus Platinum
Location	Internal	Internal	Internal	External	External	External	External
Security Grade	EN1627 RC3	EN1627 RC4t	EN1627 RC3	EN1627 RC3	EN1627 RC4	EN1627 RC4	EN1627 RC3
Accoustic Insulation	-43dB Rw	-44.8dB Rw	-43dB Rw	-44.8dB Rw	-44.8dB Rw	-46dB Rw	-46dB Rw
Thermal Insulation	1.3W/m2K	1.2W/m2K	1.6W/m2K	0.54W/m2K	1.2W/m2K	0.6W/m2K	0.54W/m2K
Air Tightness	N/A	N/A	N/A	Class 4	Class 4	Class 4	Class 4
Water Tightness	N/A	N/A	N/A	Class 6A	Class 3A	Class 9A	Class 9 A
Wind Resistance	N/A	N/A	N/A	Class C4	Class C4	Class 5	Class 5

High security locking bolts

High security steel core

Choose from a range of door furniture

Spy holes available

Optional electric strike

Available in key, electronic pin code or fingerprint locking with a thumb turn inside

Create almost any design panel to match your property

Special sub frame for high quality installation





Kronos Security Doors

 Flood Protection

 Fire Rating

- High security steel doors
- Independently tested and certified to LPS1175 SR2 - SR4
- Optional 240 minutes fire rating*
- Optional flood protection
- Insurance approved by the AiS
- Built to a Police Preferred Specification - Secured by Design
- Suitable for use in any high security environment including; banks, utility sector, retail outlets, jewellers, government, defence buildings and airports
- Custom made to fit your property size and operational requirements
- Inward or outward opening door leaves
- Single or double door sets
- Variety of locking options and optional fittings
- Available in almost any RAL colour**
- 10 year anti-rust warranty

Locking Options

 Single Key

 Pin

 Biometric

*max 60 minutes with vision panels
**some colours are at an additional cost



Variant	Min Height	Max Height	Min Width	Max Width
SR2				
Single inward opening	1000	2930	600	1430
Double inward opening	1000	2930	900	2600
Single outward opening (with removable over panels)	1000	3930	740	1430
Double outward opening (with removable over panels)	1200	3930	900	2600
Single outward opening	1000	2930	600	1430
Double outward opening	1000	2930	900	2600
Single outward opening (with fixed side and over panels)	1000	3930	740	4180
Double outward opening (with fixed side and over panels)	1200	3930	900	5200
SR3				
Single outward opening	1000	2930	600	1430
Double outward opening	1000	2930	900	2600
Single inward opening	1000	2430	600	1430
Double inward opening	1000	2430	900	2600
Single outward opening (with fixed side and over panels)	1200	4125	600	1430
Double outward opening (with removable over panels)	1200	4125	900	2600
SR4				
Single outward opening	1000	2930	600	1430
Double outward opening	1000	2930	900	2600
Single inward opening	1000	2430	600	1430



Ajax Grilles & Cages

- High security retractable grilles and cages
- Suitable for domestic and commercial properties
- Custom made to suit your individual needs
- Available in almost any RAL colour*
- Blast tested using 100kg charge at 20m behind glass backed with anti-shatter film
- Allows line of sight for guarding and CCTV
- Neatly folds away out of sight when not in use
- No hot works required during installation

* some colours at additional costs



Typhon Bar Sets

- High security fixed bar sets
- Independently tested and certified to LPS1175 SR2 - SR4
- Built to a Police Preferred Specification - Secured by Design
- Suitable for internal or external installation
- Custom made to suit your individual needs
- Available in almost any RAL colour*
- Reveal or face fixing options available
- Suitable for mounting to brickwork, concrete or steel
- Minimum 500mm x 500mm
- Allows line of sight for guarding and CCTV

* some colours at additional costs



Transporta Strongrooms

- Transportable high security container
- From the outside it looks like an ordinary container
- Ideal for the transportation of cash, weapons, explosives or sensitive confidential data
- Option to fit out the inside with internal walling, power, lighting and air conditioning
- Optional weapon racking and ammunition storage
- Optional GPS tracking can be added
- Optional side personnel door
- Double door access to maximise the opening space
- Ideal for events and exhibitions
- Ready made solution for fast deployment in an existing building
- SC10 and SC20 - tested and certified to SS3492 by SSF/SBSC
- SC800, SC3000 and SC6000 - tested and certified to EN1143-1 Grade 3 by SSF/SBSC

Locking Options



Model	External (HxWxD)	Internal (HxWxD)	Weight	Cash Rating
SC10	2440 x 2440 x 2980	2110 x 2110 x 2560	2040kg	£4,000
SC20	2440 x 2440 x 6170	2110 x 2110 x 5660	3800kg	£4,000
SC800	2140 x 1125 x 1490	1750 x 850 x 1250	1500kg	£35,000
SC3000	2430 x 2440 x 2990	2180 x 2165 x 2560	4000kg	£35,000
SC6000	2940 x 2560 x 6320	2240 x 2200 x 5660	9000kg	£35,000





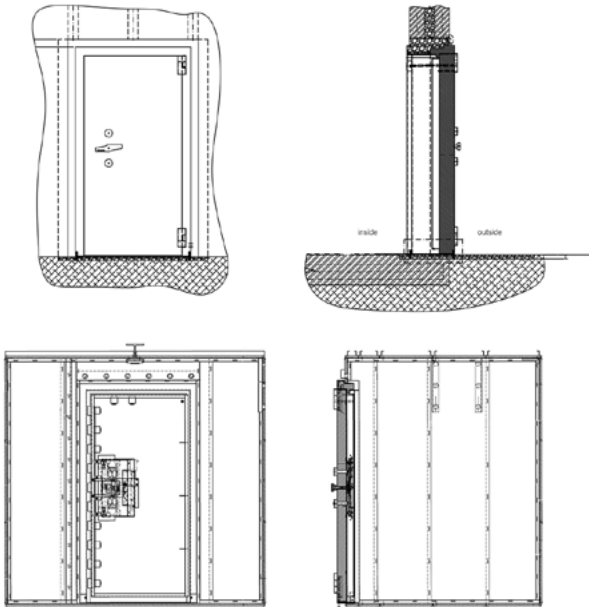
Orthrus Strongrooms

A freestanding high security solution of modular construction, Orthrus delivers optimum price/performance ratio. It is certified to the very latest LPS standard – LPS1175: Issue 8 and has achieved security rating F10/G5. Each room is built to order according to the individual size and security requirements of the client. The flexibility of design and build allow this to be the perfect solution in the commercial world for high value items or indeed military/government use for sensitive materials or meeting spaces.

Locking Options



- Freestanding high security safe room
- Modular construction to create bespoke rooms built to your specification
- Independently tested and certified to LPS1175 (Issue 8) F10/G5
- Built to a Police Preferred Specification - Secured by Design
- Ideal solution for creating a secure space within an existing structure
- Ideal for commercial, military and government use
- Exceeds requirements of the UK Environment Agency for the storage of radioactive source material/equipment
- Panel widths range from 150mm to 1500mm
- Rooms can be 5 or 6 sided
- Design, consultancy service and installation provided by Burton Safes
- The door and locking system can be connected to client's own alarm system and access control system
- A 2nd or 3rd lock can be added to your vault door if required
- Lock features 4 manager codes, 36 user codes, time delay and time windows, dual user functions and audit trails
- Optional emergency door is available



Example Room Drawing

Vault panel information

Model	Min-Max Length*	Min-Max Width	Thickness	Weight p/m2
Orthrus	1950 - 3950 (wall) 2900 (ceiling)	150 - 1500	27	90kg

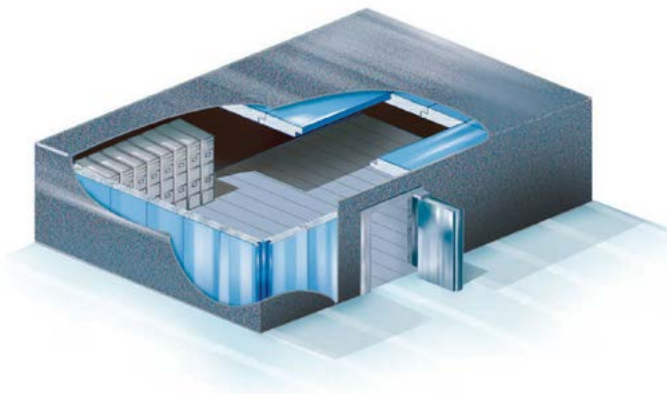
*without additional steel supports

Vault door information

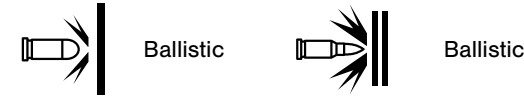
Model	Clear Opening Heigh	Clear Opening Width	Thickness	Weight p/m2
Standard Size	1960	910	160	900
Certified Range	1810 - 3950	510 - 1950	160	900
Emergency Door (in wall panels)	510	1068	160	450

*without additional steel supports





Cerberus Vaults and Doors



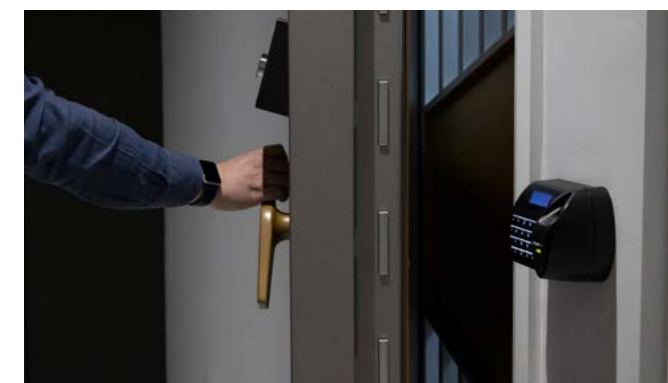
- Independently tested and certified to EN1143-1 Grades 1 - 13
- Grades 6 - 13 have been tested and certified to EX, providing additional protection against explosives
- Grades 8 - 13 have been tested and certified to CD, providing special protection against core drills
- Insurance approved by the AiS
- Built to a Police Preferred Specification - Secured by Design
- Designed to suit your size and security requirements
- Panels can be provided in lengths of up to 3600mm and can be fitted with cable and ventilation holes if required
- Mounting plates for seismic detectors can be added to your vault
- Steel cladding for the exterior is available on request
- Burton Safes offer a full consultation, design and building service. Upon completion the room is inspected and registered with VDS
- All Cerberus doors come with 2 locks as standard and a third can be ordered on request. The locks are located on the outside only
- Cerberus doors can be supplied with key, mechanical combination or electronic locks
- Electronic locks can offer redundant systems, dual user, time delay, time lock, duress alarms, audit trails, one time codes, remote programming and tiered access rights
- All doors can only open outwards and can open 180
- An emergency door can be intergrated into the main vault door or installed as a seperate door*
- A day gate can be fitted to the main vault door on request and comes with a single key lock and a second key or electric strike
- Exit handles and hydraulic closers can be added on request

Locking Options

*Integrated door in door only available on Grades 1-3



Vault Model	Grade (EN1143-1)	Wall Thickness	Weight p/m2	Standard Door Aperture	Weight of Standard Door
Cerberus 1	1	27	100kg	1960 x 910	790kg
Cerberus 2	2	27	110kg	1960 x 910	795kg
Cerberus 3	3	70	210kg	1960 x 910	823kg
Cerberus 4	4	70	210kg	1960 x 910	900kg
Cerberus 5	5	70	210kg	1960 x 910	900kg
Cerberus 6	6	70	225kg	1960 x 910	900kg
Cerberus 8	8	125	390kg	1960 x 910	1410kg
Cerberus 10	10	195	600kg	1960 x 910	2000kg
Cerberus 12	12	250	900kg	1960 x 910	2805kg
Cerberus 13	13	415	1215kg	1960 x 920	4300kg





Shanghai Safe Deposit Boxes

- A range of low cost safe deposit boxes
- Ideal for use in banks, safe deposit centres or hotels
- Stainless steel facia
- Dual key locking as standard
- 6 different door sizes
- 3 standard depths - 610/510/410
- Optional pull out shelves
- Metal inner box as standard with all sizes*
- Full design and consultancy provided by Burton Safes

• except SSDBB60

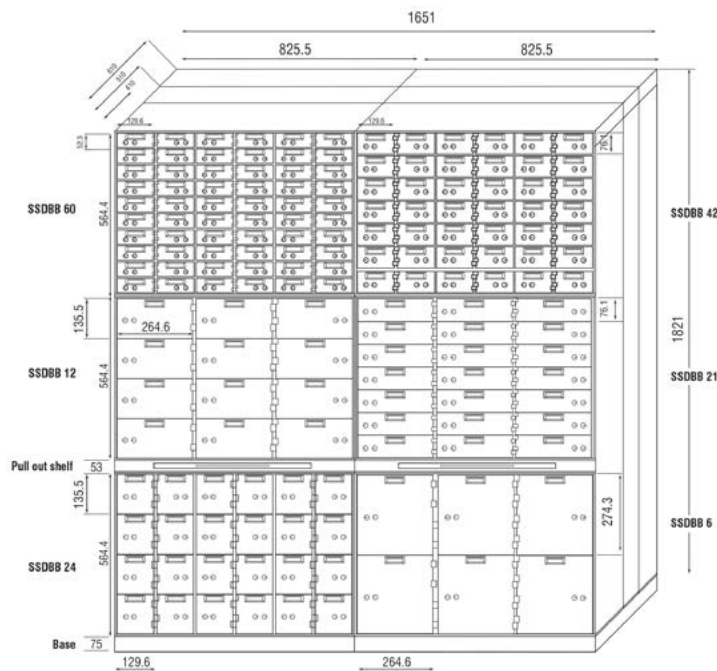
Locking Options



Dual Locking



Box Size	Internal dimensions
SSDBB 60	42 x 120 x 540/440/340
SSDBB 42	65 x 120 x 540/440/340
SSDBB 24	115 x 120 x 540/440/340
SSDBB 21	65 x 250 x 540/440/340
SSDBB 12	115 x 250 x 540/440/340
SSDBB 6	250 x 250 x 540/440/340





Vienna Safe Deposit Boxes

- A range of high quality safe deposit boxes with high security locks and advanced software options
- Ideal for use in banks and safe deposit centres
- 6mm steel door
- Stainless steel fascia
- Choice of dual key or key and electronic locking system
- Electronic system offers increased security through permanent monitoring of the door status. Unauthorised entry and tampering will trigger alarms
- Electronic system offers the option of a 'self service system'. Reducing running costs for banks and safe deposit centres
- Vienna Safe Service 6.0 offers the most advanced safe deposit management system on the market - control multiple centres, control day gates and interlocks, monitor box status, record client accesses, set up billing functions and run invoicing
- Key locking systems offer a choice of security levels and lock types to suit different budgets
- Plastic inner cassettes as standard with most box sizes
- Also available in different colour options below the stainless steel fascia

Locking Options



Single Key



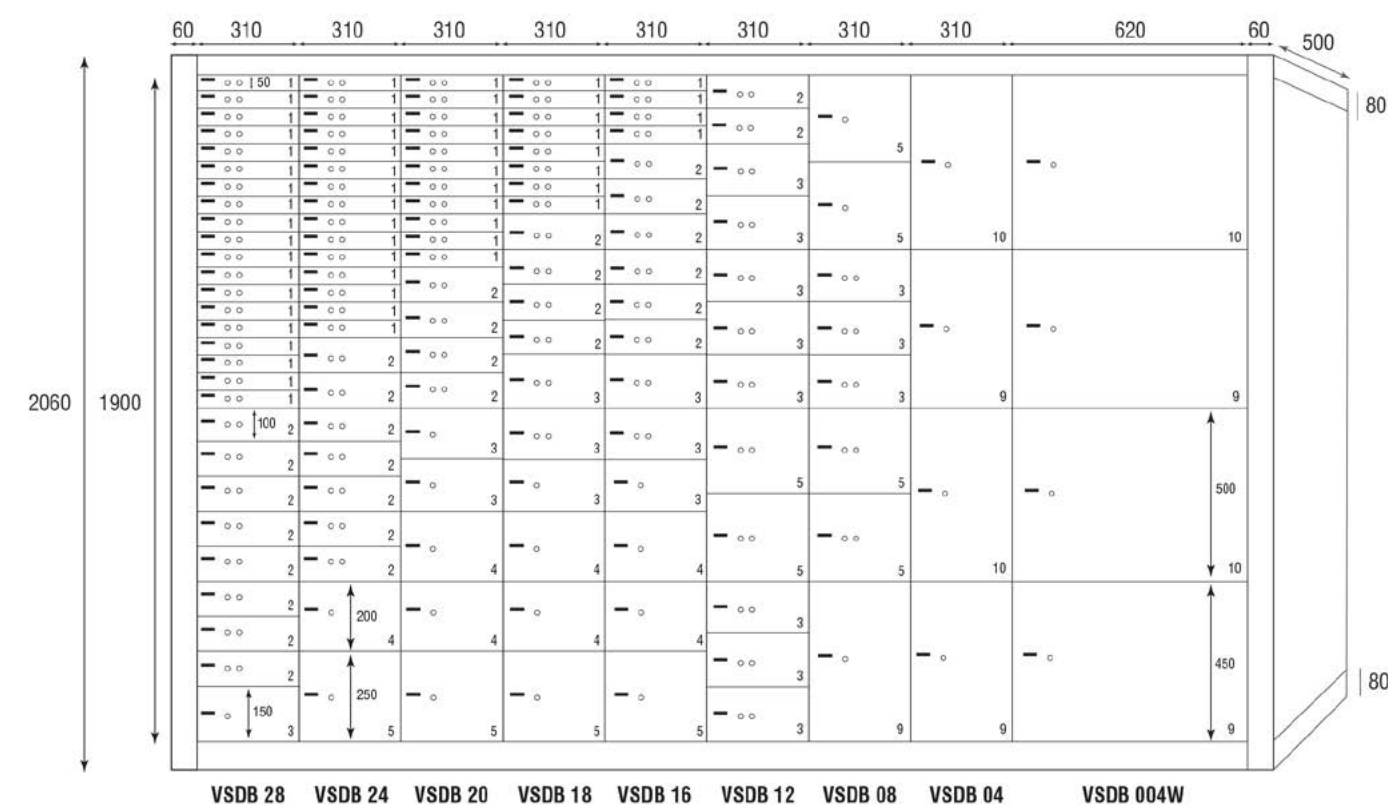
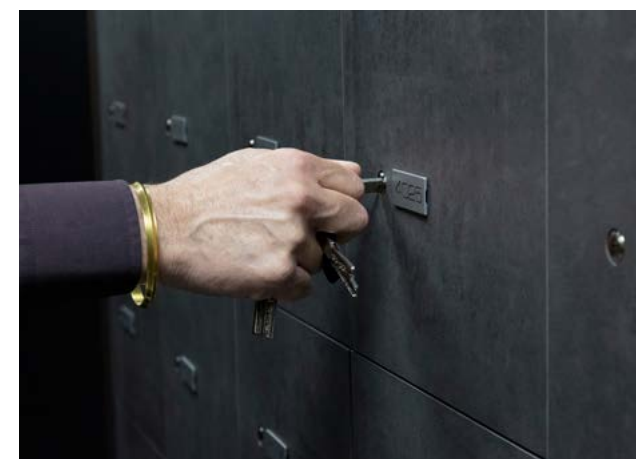
Pin



Biometric

Box Size	Internal dimensions
1	48.5 x 265 x 413
2	98.5 x 265 x 413
3	148.5 x 265 x 413
4	198.5 x 265 x 413
5	248.5 x 265 x 413
9	448.5 x 265 x 413
10	498.5 x 265 x 413
9 W	448.5 x 575 x 413
10 W	498.5 x 575 x 413

Industry leading self-service software system option available





Vaduz Safe Deposit Box System

- 24/7 Self service safe deposit system
- Solid steel lockers
- Lockers come in 4 sizes;
50-230mm (H) x 240mm (W) x 360mm (D)
- Vaults certified to EN1143-1
- Dispense lockers through the wall at ground floor level or via a tower dispense system
- Space saving - two lockers can be stacked one behind the other
- Planning, design, installation and maintenance provided by Burton Safes
- Software for administration and control of safe deposit system
- Spare parts guarantee for 10 years

Locking Options

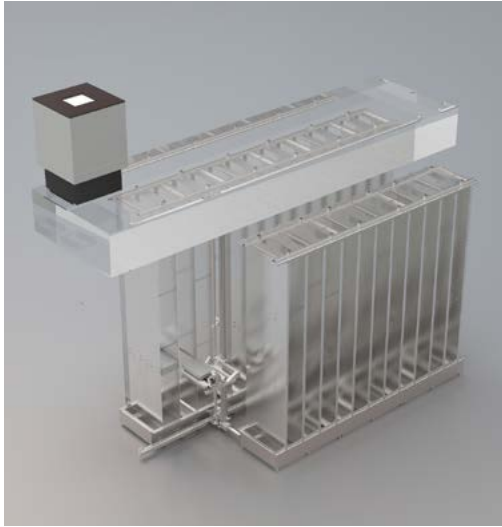


Pin



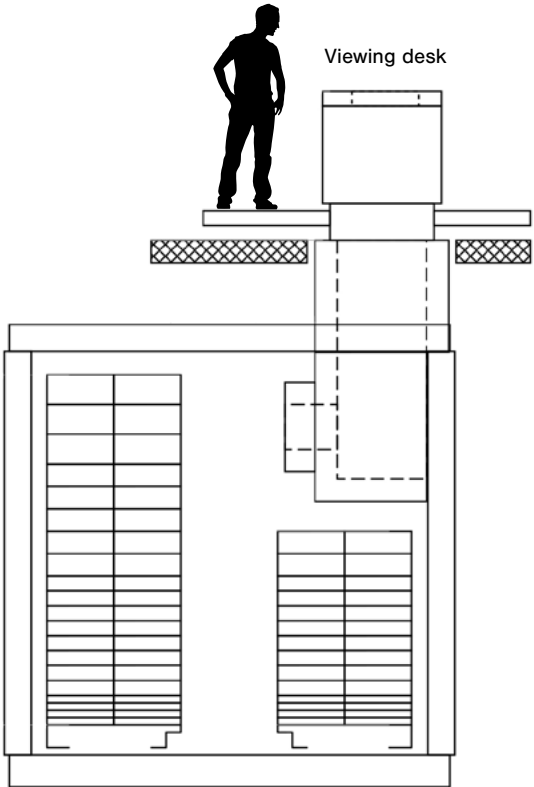
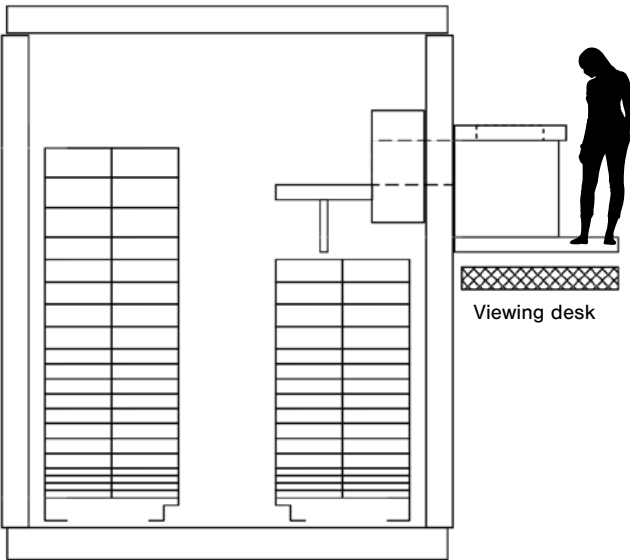
Biometric

Box Size	Dimensions
1	50 x 240 x 360
2	110 x 240 x 360
3	170 x 240 x 360
4	230 x 240 x 360



State-of-the-art safe deposit system increasingly used by banks to reduce running costs and offer customers increased access to their deposit boxes. No staff are required for operation of the system and the vault always remains secure. Full design and consultancy is provided by Burton Safes, contact us for more information.

Example of Vaduz vault and safe deposit box construction





Zurich Safe Deposit System

- Upgrades key locking safe deposit systems to a self service electronic operation
- Reduces staffing costs
- Increase security levels with permanent monitoring of the box status
- Alarms can be generated in the event of unauthorised access
- Simple and quick upgrade with minimal down time
- No need to open boxes to fit the system
- Wireless communication avoids damaging/disrupting the existing room
- Cheaper and less disruptive than changing your boxes to new electronic models

Locking Options



Pin



Biometric



Associated Security Products

With banks removing safe deposit facilities at a considerable rate, we have found that private businesses are launching their own safe deposit centres.

With over 85 years experience in our Sure Defence team, we can supply the complete turnkey solution. We provide installation of the vault and supply a choice of four safe deposit box options. We also provide security window counters, security doors, interlock systems, access control, cash trolleys and sanitiser units.

Security Window Counters

Providing security for staff is a key ingredient to a security solution. Our security counters and windows keep staff safe while being able to serve customers from a secure office. Options include ballistic protection for added peace of mind.



Sanitiser Units

With the pandemic continuing, keeping customers and staff safe is vital. Our sanitiser units provide the perfect hands free solution.



Security Doors

Our Janus high security doors provide the perfect solution for offices, banks and prestigious or listed buildings. They are custom made to suit your requirement and a range of fittings and door furniture are available.

With a choice of two security levels, Janus doors are independently attack tested to EN1627 RC3 and RC4. Options available on request include security glazing, bullet resistance and emergency / panic hardware.

Kronos doors are suited for a high security environment and are tested to LPS1175 SR2 to SR4 by LPCB. These are custom made to suit your opening and can have different fittings built into the door. Options include single or double door sets, fire rating up to 2 hours and flood protection.

Interlocks and Access Control Systems

Our technical team design and build interlock systems that work with the many different applications that are needed by our customers.

An interlock solution is an essential part of the package to protect staff and maintain security protection. Access control forms an important part of the interlocking solution and we can offer different solutions based on your choice of safe deposit system.

Cash Trolleys





Key Safes

The Key Safe range is the perfect security solution for securing and storing keys. This range includes Keyguard allowing authorised access to carers, cleaners, workmen, dependents, holiday lets, and key cabinets designed for use in showrooms, garages, universities, schools and large commercial sites.

We provide products that answer a variety of requirements: UK Police Preferred Specification under the Secured by Design scheme, and the Keyguard Digital XL is certified to LPS1175 (Issue 8) A3.

LPS1175 Issue 8 is an independent attack test certification. A tool list is selected and then time given to withstand a physical attack. Keyguard XL is the first key safe to achieve this level.

LPCB is part of the BRE Group, the world renowned certification and testing facility who test and certify products to the very latest attack methods.



High Security Solution for storing keys

Keyguard Combi



- Combination key safe
- 4 digit roller combination which is simple to set and change
- Ideal for the safe keeping of household keys
- Choose your own code and change it whenever you like
- Weather-resistant rubber cover included
- Fixings included
- 2 Year warranty

Locking Options



Dial



Model	External (HxWxD)	Internal (HxWxD)	Weight
KG Combi	115 x 65 x 55	80 x 40 x 20	1kg

Keyguard Digital



- Superior push button key safe
- 12 button design
- Ideal for use by carers, cleaners, workmen and dependents
- Can be used for storing most single car keys inside the home
- Over 4,000 possible code combinations
- Holds up to 80mm long keys
- Weather-resistant rubber cover included
- Fixings included
- 2 Year warranty

Locking Options



Pin



Model	External (HxWxD)	Internal (HxWxD)	Weight
KG Digital	115 x 65 x 55	80 x 40 x 20	1kg



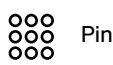
High Security Solution for storing keys

Keyguard Digital XL



- The world's first key safe to be successfully certified to LPS1175 Issue 8
- Police Preferred Specification
- Independently tested and certified to LPS1175 Issue 8 A3
- Permanent, lightweight, weather-resistant cover provided. This doubles as a fixing template for quick and easy install
- Bright numbers and indicators for ease of use
- Internal key hook
- Over 4,000 possible code combinations
- Code can be changed multiple times
- Allows storage for multiple keys or key cards
- Fixings are provided
- Also certified for fixing to rendered walling
- 5 year warranty

Locking Options



Pin



Model	External (HxWxD)	Internal (HxWxD)	Weight
KG XL	160 x 95 x 55	70 x 50 x 20	2kg



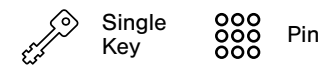


CK/E 40

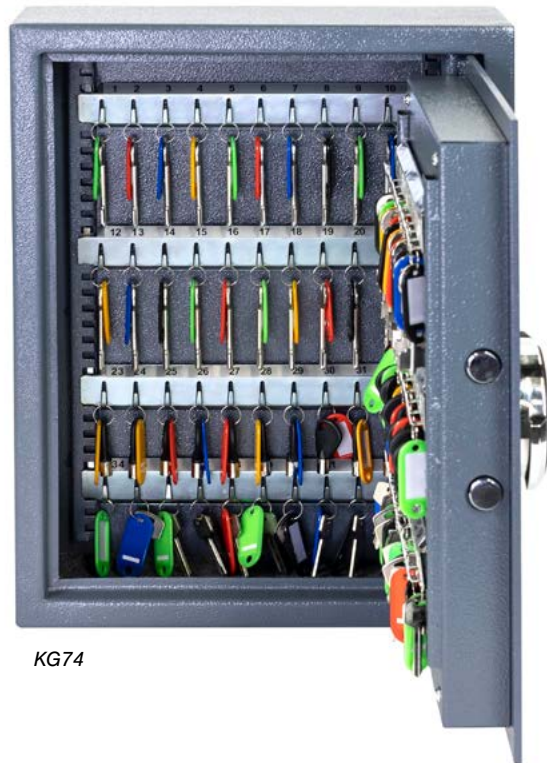
Heavy Duty Key Cabinets

- Top quality range of key cabinets that offer a high level of security
- Ideal for use in car showrooms, garages, universities, schools and large commercial sites
- 8mm solid steel door and 3mm steel body
- High security, 8 lever key lock or electronic PIN code lock
- Electronic version features a flush keypad, an emergency key and an external power point in case of lock out
- Door secured by two solid locking bolts

Locking Options



Model	External (HxWxD)	Internal (HxWxD)	Weight	Key Hooks
CK/E 40	470 x 360 x 140	460 x 350 x 120	25kg	40
CK/E 120	470 x 360 x 140	460 x 350 x 120	27kg	120



KG74

KG Keyguard Key Safes

- Range of economical key safes
- Ideal for use in car showrooms, garages, universities, schools and large commercial sites
- 4mm Solid steel door and 2mm steel body
- Electronic PIN code - 1 user and 1 master code
- Supplied with emergency override keys in case of lock out
- Height adjustable numbered key racks
- Key tags supplied
- Prepared for wall mounting

Locking Options

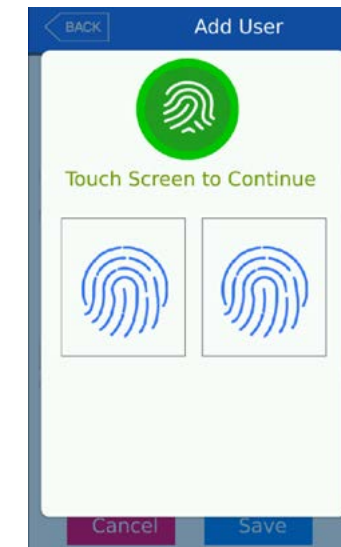


Model	External (HxWxD)	Internal (HxWxD)	Weight	Key Hooks
KG27	360 x 300 x 120	350 x 290 x 40	9kg	27
KG74	450 x 360 x 120	440 x 350 x 65	14kg	74
KG138	660 x 420 x 120	650 x 410 x 65	19kg	138

Add 10mm to the external depth to include the keypad



KMS Terminal



KMS Intelligent Key Cabinets

- Automate the process of handing out and receiving keys
- Control user and time access to all keys
- Create rules for key management and send exception reports if they are broken
- Monitor key and user use in real time
- Anti-tamper steel key rings
- Access via RFID card as standard, option to add PIN code or fingerprint access
- Built-in power supply
- Ideal for use in hotels, government organisations, car showrooms, schools, hospitals and other commercial sites
- Can be stand alone or networked

Locking Options



Model	External (HxWxD)	Weight	Key Hooks
KMS 5	265 x 500* x 150	11kg	5
KMS 20	510 x 555* x 170	27kg	20
KMS 30	605 x 555* x 170	29kg	30
KMS 50	790 x 555* x 170	37kg	50
KMS 100	976 x 735* x 170	57kg	100

*not including terminal





Retail Safes

Deposit safes have become a necessity for businesses as hold up situations and internal fraud have become an increasing threat. Some of these safes have been independently tested and certified to EN143-2 by ECBS.

Having a separate deposit drawer means staff can deposit cash/valuables without having access to the main safe.

Both the drawer and the safe door are fitted with separately operated high security locks. These models have optional locking including mechanical combination, electronic PIN or advanced biometric locking systems.



Till Safe



Cash Rating
£4,000 or £10,000



Jewellery Rating
£40,000 or £100,000

- Independently tested and certified to EN14450 S2 or EN1143-1 Grade 1
- Insurance approved by the AiS
- Built to a Police Preferred Specification - Secured by Design
- Grade 1 Till Safe tested and certified to EN15659 LFS30P providing 30 minutes fire protection for paper
- Designed for storage of till drawers
- Store a minimum of 4 drawers in each model
- 2 different security levels to suit your requirements
- High security electronic locking on S2, option of key, electronic or biometric locking on the Grade 1
- Back and base fixing

Locking Options



Single Key



Pin

Model	External (HxWxD)	Internal (HxWxD)	Weight	Volume	Shelves
S2 Till	510 x 550 x 500	430 x 470 x 400	47kg	80L	3
G1 Till	840 x 650 x 550	782 x 574 x 420	289kg	189L	2

Add 55mm to external depth for handle on G1 Till



Cashguard Vehicle Safes

- Ideal for use in vans / lorries on delivery rounds
- A range of deposit slots and security levels to suit your requirements
- Base plates attach to the vehicle and the main safe body is locked into these
- The safe has two locks, one for the base plate and one for the safe door
- The two locks are on different keys.
 - This allows drivers to move the safe from the base plate without having access to the contents of the safe

Locking Options



Single Key

Model	External (HxWxD)	Internal (HxWxD)	Slot Size	Weight	Volume
Mini	255 x 165 x 150	210 x 160 x 145	90 x 32	5kg	4L
Cashguard	380 x 205 x 150	350 x 200 x 120	150 x 90	15kg	8L



Teller Deposit Safe



Cash Rating
Up to £3,000

- Choice of deposit methods and trap sizes to suit your requirements
- Size 1 V Trap deposit via a front loading V Trap system
- Size 1 Rotary deposits via a top loading rotary drum
- Option of key, electronic or biometric locking*
- Automatic slam locking system**
- Back and Base fixing

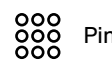
*Electronic and biometric locking not available on the Mini Teller

**If fitted with the Burton Duo swing lock or the Kaba Axessor

Locking Options



Single Key



Pin



Biometric



Dial

Model	External (HxWxD)	Internal (HxWxD)	Slot Size	Weight	Volume
Mini Teller	305 x 205 x 255	295 x 195 x 180	20 x 135 x 200	15kg	10L
Size 1 Rotary	510 x 355 x 355	330 x 345 x 275	255 x 105 x 120	40kg	31L
Size 1 V Trap	505 x 355 x 355	220 x 345 x 275	45 x 265 x 190	40kg	21L

Add 45mm to external depth for handle on sizes 1 and 2



Eurovault Aver Deposit Grade 1



Cash Rating
£10,000

- Independently tested and certified to EN1143-2 Grade 1 by ECBS
- Insurance approved by the AiS
- Built to a Police Preferred Specification - Secured by Design
- Drawer deposit means staff can deposit without accessing the main safe
- Option of key, electronic or biometric locking for both main door and deposit drawer
- Time delay, time windows and duress features available with electronic lock upgrade
- Base fixing

Locking Options



Single Key



Pin



Biometric



Dial

Model	External (HxWxD)	Internal (HxWxD)	Max Deposit Size	Weight	Volume	Shelves
Size 1	670 x 650 x 550	455 x 573 x 423	100 x 500 x 120	190kg	110L	-
Size 2	1040 x 650 x 550	816 x 573 x 423	100 x 500 x 120	270kg	298L	2

Add 55mm to external depth for handle



High Security Deposit Safe Grade 2



Cash Rating
£17,500

- Independently tested and certified to EN1143-2 Grade 2 by SBSC
- Insurance approved by the AiS
- Built to a Police Preferred Specification - Secured by Design
- Deposit drawer means staff can deposit without accessing the main safe
- Deposit drawer is secured by a high security key lock
- Option of key, electronic or biometric locking on the main door
- Rear facing/through wall deposit available to order
- Base fixing

Locking Options

Any lock alterations must conform to EN1300 Class A.



Single Key



Dual Locking



Pin



Biometric



Dial

Model	External (HxWxD)	Internal (HxWxD)	Max Deposit Size	Weight	Volume	Shelves
Size 1	770 x 565 x 540*	400 x 390 x 330	25 x 320 x 100	416kg	51L	-
Size 2	970 x 565 x 540*	600 x 390 x 330	25 x 320 x 100	485kg	77L	-

Add 55mm to external depth for handle *Add 20mm to external width for hinges



High Security Deposit Safe Grade 3



Cash Rating
£35,000

- Independently tested and certified to EN1143-2 Grade 3 by SBSC
- Insurance approved by the AiS
- Built to a Police Preferred Specification - Secured by Design
- Deposit drawer means staff can deposit without accessing the main safe
- Deposit drawer is secured by a high security key lock
- Option of key, electronic or biometric locking on the main door
- Rear facing/through wall deposit available to order
- Base fixing

Locking Options

Any lock alterations must conform to EN1300 Class B.



Single Key



Dual Locking



Pin



Biometric



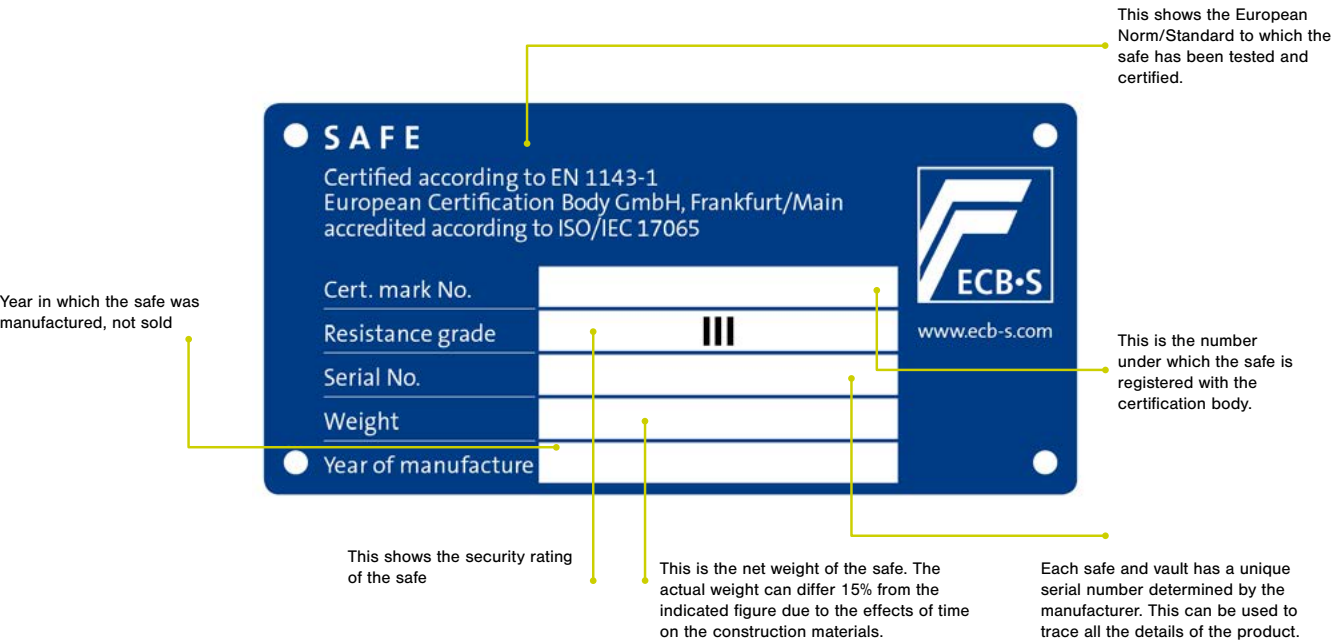
Dial

Model	External (HxWxD)	Internal (HxWxD)	Max Deposit Size	Weight	Volume	Shelves
Size 1	770 x 565 x 540*	400 x 390 x 330	25 x 320 x 100	420kg	51L	-
Size 2	970 x 565 x 540*	600 x 390 x 330	25 x 320 x 100	525kg	77L	-

Add 55mm to external depth for handle *Add 20mm to external width for hinges

Safe Security Standards

Every safe and vault which is certified to EN 14450, EN 1143-I & EN 1143-2 should have a certification plate on the back of the door. This gives you important information about the product and its security rating.



Product	Standard	Rating	Certification
RETAIL SAFES			
Till Safe S2	EN14550	S2	ECBS
Till Safe Grade 1	EN1143-1 & EN15659	Grade 1 & LFS 30P	ECBS
Teller Deposit	n/a	Recommended £1,000 - £3,000 Cash Rating	n/a
Cashguard Vehicle	n/a	n/a	n/a
Eurovault Aver Deposit Grade 1	EN1143-2	Grade 1	ECBS
High Security Deposit Grade 2	EN1143-2	Grade 2	SBSC
High Security Deposit Grade 3	EN1143-2	Grade 3	SBSC
HIGH SECURITY SAFES			
Eurovault Aver Grade 0	EN1143-1 & EN15659	Grade 0 & LFS 30P	ECBS
Eurovault Aver Grade 1	EN1143-1 & EN15659	Grade 1 & LFS 30P	ECBS
Eurovault Aver Grade 2	EN1143-1 & EN15659	Grade 2 & LFS 30P	ECBS
Eurovault Aver Grade 3	EN1143-1 & EN15659	Grade 3 & LFS 30P	ECBS
Eurovault Aver Grade 4	EN1143-1 & EN15659	Grade 4 & LFS 30P	ECBS
Eurovault Aver Grade 5	EN1143-1 & EN15659	Grade 5 & LFS 30P	ECBS
Eurovault Atlas Grade 6	EN1143-1	Grade 6	SBSC
Eurovault Atlas Grade 7	EN1143-1	Grade 7	SBSC
LUXURY SAFES			
Eurovault LX	EN1143-1 & EN15659	Grade 1 to Grade 5 & LFS 30P	ECBS
Eurovault LX	EN1143-1	Grade 6 & Grade 7	SBSC
KEY SAFES & CABINETS			
Keyguard Combi	n/a	n/a	n/a
Keyguard Digital	n/a	n/a	n/a
Keyguard Digital XL	LPS1175	Issue 8 A3	LPCB
Heavy Duty Key Cabinets	n/a	n/a	n/a
KG Keyguard Key Safes	n/a	n/a	n/a
KMS Intelligent Key Cabinets	n/a	n/a	n/a



High Security Safes

From £100k jewellery rating to Europe's Highest security safe providing £2.5M jewellery rating; all of our high security products are independently tested and certified by internationally recognised test houses and validated by the Association of Insurance Surveyors.

At Burton Safes we work on some of the world's most secure sites. That experience filters into our products and the benefits reach you. Our range contains models with features such as double walled steel products with ultra-high performance concrete, certified fire protection, relocking devices, glass plates, and special drill protective elements for the lock and bolt work.

We deliver key and electronic locking solutions, including the use of the latest biometric technology.

Our locking solutions include features such as alarm and CCTV integration, dual user entry, time delays and windows, duress codes, temporary and one user time codes to name a few. We also have a wide range of optional extras to provide for every eventuality, whether that be jewellery inserts or additional shelves.



Eurovault Aver Grade 0



Cash Rating
£6,000



Jewellery Rating
£60,000



Fire Rating 30 minute
Fire protection for paper



- Independently tested and certified to EN1143-1 Grade 0 and EN15659 LFS30P by ECBS
- Suitable for storage of controlled drugs with active ingredients exceeding 500g
- Option of left hand hinge - additional lead times and costs apply
- Height adjustable shelving
- Base fixing

Locking Options



Single Key



Pin

Model	External (HxWxD)	Internal (HxWxD)	Weight	Volume	Shelves
Size 1	460 x 440 x 430	382 x 364 x 300	119kg	42L	1
Size 2	655 x 440 x 430	574 x 364 x 300	155kg	63L	1
Size 3	900 x 440 x 430	822 x 364 x 300	205kg	90L	2

Add 55mm to external depth for handle



Eurovault Aver Grade 1



Cash Rating
£10,000



Jewellery Rating
£100,000



Fire Rating 30 minute
Fire protection for paper



- Independently tested and certified to EN1143-1 Grade 1 and EN15659 LFS30P by ECBS
- Insurance approved by the AiS
- Built to a Police Preferred Specification - Secured by Design
- Suitable for storage of controlled drugs with active ingredients exceeding 500g
- Option of left hand hinge - additional lead times and costs apply
- Height adjustable shelving
- Base fixing
- We also have a Grade 1 Deposit Safe featured on page 37

Locking Options



Single Key



Pin



Model	External (HxWxD)	Internal (HxWxD)	Weight	Volume	Shelves
Size 1	340 x 500 x 345	262 x 424 x 216	93kg	24L	1
Size 2	460 x 440 x 430	382 x 364 x 300	119kg	42L	1
Size 3	655 x 440 x 430	574 x 364 x 300	155kg	63L	1
Size 4	900 x 440 x 430	822 x 364 x 300	205kg	90L	2
Size 5	840 x 650 x 550	782 x 574 x 420	289kg	189L	2

Add 55mm to external depth for handle





Eurovault Aver Grade 2



Cash Rating
£17,500



Jewellery Rating
£175,000



Fire Rating 30 minute
Fire protection for paper



- Independently tested and certified to EN1143-1 Grade 2 and EN15659 LFS 30P by ECBS
- Insurance approved by the AiS
- Built to a Police Preferred Specification - Secured by Design
- Suitable for storage of controlled drugs with active ingredients exceeding 500g
- Choose from high security key or electronic locking
- Option of dual locking - not sizes 0 & 1
- Option of left hand hinge - additional lead time and costs apply
- Cable hole for alarm connection
- Height adjustable shelving
- Back and base fixing
- We also have a Grade 2 Deposit Safe featured on page 38

Locking Options

Any lock alterations must conform to EN1300 Class A.



Single Key



Dual Locking



Pin



Biometric



Dial

Model	External (HxWxD)	Internal (HxWxD)	Weight	Volume	Shelves
Size 0	460 x 470 x 470	345 x 355 x 320	180kg	39L	1
Size 1	500 x 510 x 510	385 x 395 x 360	211kg	55L	1
Size 2	670 x 510 x 510	555 x 395 x 360	262kg	79L	1
Size 3	610 x 680 x 510	495 x 565 x 360	297kg	100L	1
Size 4	810 x 680 x 510	695 x 565 x 360	368kg	141L	2
Size 5	1010 x 680 x 510	895 x 565 x 360	439kg	182L	2
Size 6	1320 x 680 x 510	1205 x 565 x 360	552kg	244L	3
Size 7	1510 x 850 x 600	1375 x 715 x 440	863kg	431L	3

Add 55mm to external depth for handle



Eurovault Aver Grade 3



Cash Rating
£35,000



Jewellery Rating
£350,000



Fire Rating 30 minute
Fire protection for paper



- Independently tested and certified to EN1143-1 Grade 3 and EN15659 LFS 30P by ECBS
- Insurance approved by the AiS
- Built to a Police Preferred Specification - Secured by Design
- Suitable for storage of controlled drugs with active ingredients exceeding 500g
- Choose from high security key or electronic locking
- Option of dual locking - not sizes 0 & 1
- Option of left hand hinge - additional lead time and costs apply
- Cable hole for alarm connection
- Height adjustable shelving
- Back and base fixing
- We also have a Grade 3 Deposit Safe featured on page 38

Locking Options

Any lock alterations must conform to EN1300 Class B.



Single Key



Dual Locking



Pin



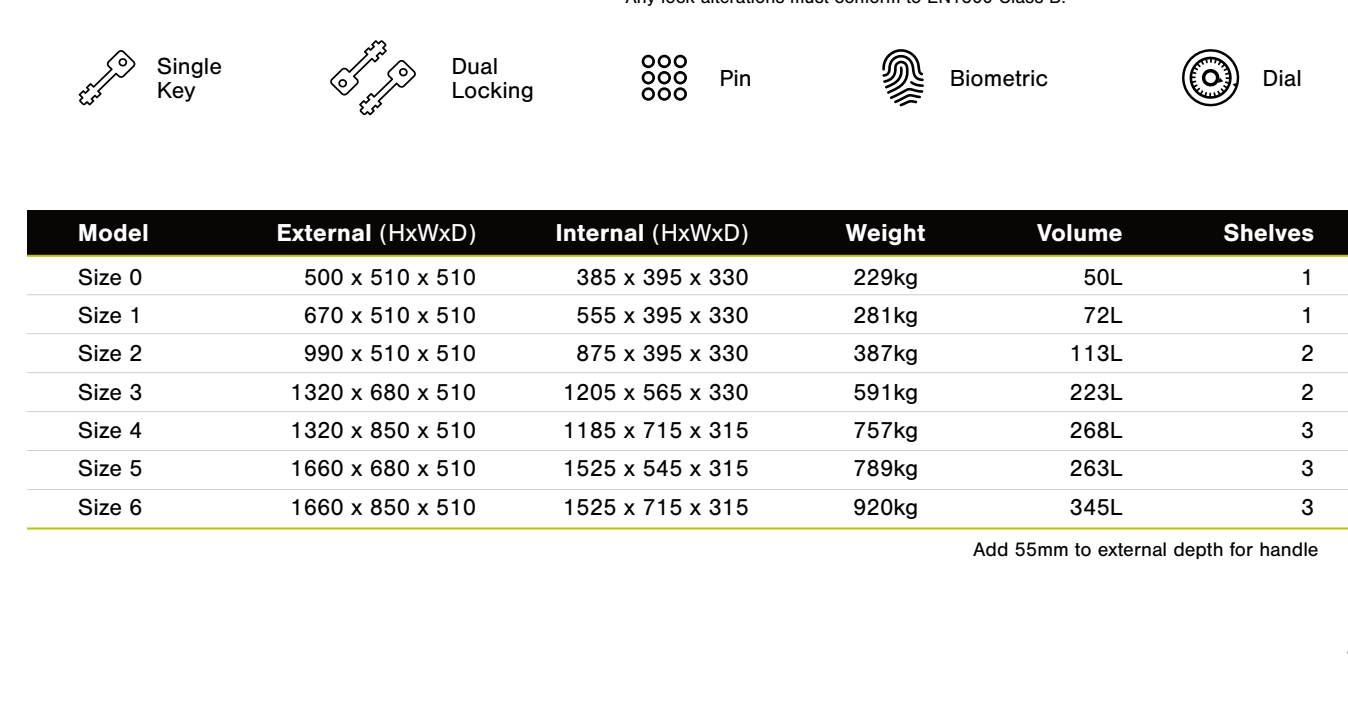
Biometric



Dial

Model	External (HxWxD)	Internal (HxWxD)	Weight	Volume	Shelves
Size 0	500 x 510 x 510	385 x 395 x 330	229kg	50L	1
Size 1	670 x 510 x 510	555 x 395 x 330	281kg	72L	1
Size 2	990 x 510 x 510	875 x 395 x 330	387kg	113L	2
Size 3	1320 x 680 x 510	1205 x 565 x 330	591kg	223L	2
Size 4	1320 x 850 x 510	1185 x 715 x 315	757kg	268L	3
Size 5	1660 x 680 x 510	1525 x 545 x 315	789kg	263L	3
Size 6	1660 x 850 x 510	1525 x 715 x 315	920kg	345L	3

Add 55mm to external depth for handle





Eurovault Aver Grade 4



Cash Rating
£60,000



Jewellery Rating
£600,000



Fire Rating 30 minute
Fire protection for paper



- Independently tested and certified to EN1143-1 Grade 4 and EN15659 LFS 30P by ECBS
- Insurance approved by the AiS
- Built to a Police Preferred Specification - Secured by Design
- Dual locking as standard - combination of key and/or electronic as required
- Kaba Connect with lock mount fitted as standard on dual electronic models
- Burton Safes recommends Kaba Connect is used with mains power
- Alternative electronic locks available upon request
- Network or one time code lock options available
- Cable hole for alarm connection
- Option of left hand hinge - additional lead time and costs apply
- Height adjustable shelving
- Back and base fixing

Locking Options



Dual Locking



Pin



Biometric



Dial

Any lock alterations must conform to EN1300 Class B.

Model	External (HxWxD)	Internal (HxWxD)	Weight	Volume	Shelves
Size 1	550 x 550 x 530	435 x 435 x 335	297kg	64L	1
Size 2	670 x 550 x 530	555 x 435 x 335	348kg	81L	1
Size 3	840 x 550 x 530	725 x 435 x 335	420kg	106L	1
Size 4	1010 x 550 x 530	895 x 435 x 335	484kg	131L	2
Size 5	1510 x 680 x 560	1425 x 545 x 355	905kg	276L	3

* Add 55mm to external depth for handle. Kaba Connect lock with mount protrudes 90mm.

Eurovault Aver Grade 5



Cash Rating
£100,000



Jewellery Rating
£1,000,000



Fire Rating 30 minute
Fire protection for paper



- Independently tested and certified to EN1143-1 Grade 5 and EN15659 LFS 30P by ECBS
- Insurance approved by the AiS
- Built to a Police Preferred Specification - Secured by Design
- Dual locking as standard - combination of key and/or electronic as required
- Kaba Connect with lock mount fitted as standard on dual electronic models
- Burton Safes recommends Kaba Connect is used with mains power
- Alternative electronic locks available upon request
- Network or one time code lock options available
- Cable hole for alarm connection
- Option of left hand hinge - additional lead time and costs apply
- Height adjustable shelving
- Back and base fixing

Locking Options



Dual Locking



Pin



Biometric



Dial

Any lock alterations must conform to EN1300 Class B.

Model	External (HxWxD)	Internal (HxWxD)	Weight	Volume	Shelves
Size 1	680 x 680 x 630	540 x 540 x 380	675kg	111L	1
Size 2	840 x 680 x 680	700 x 540 x 430	836kg	163L	1
Size 3	1010 x 680 x 680	870 x 540 x 430	975kg	203L	2
Size 4	1510 x 680 x 680	1370 x 540 x 430	1391kg	320L	3

* Add 55mm to external depth for handle. Kaba Connect lock with mount protrudes 90mm.





Eurovault Atlas Grade 6

Cash Rating
£150,000

Jewellery Rating
£1,500,000



- Independently tested and certified to EN1143-1 Grade 6 by SBSC
- Insurance approved by the AiS
- Built to a Police Preferred Specification - Secured by Design
- Dual locking as standard - combination of key and/or electronic as required
- Option of left hand hinge additional lead time and costs apply
- Height adjustable shelving
- Base fixing

Locking Options

Any lock alterations must conform to EN1300 Class C.

Dual Locking

Pin

Biometric

Dial

Model	External (HxWxD)	Internal (HxWxD)	Weight	Volume	Shelves
Size 1	1080 x 690 x 660	900 x 500 x 400	1162kg	180L	2
Size 2	1380 x 690 x 660	1200 x 500 x 400	1390kg	240L	2
Size 3	1680 x 690 x 660	1500 x 500 x 400	1610kg	300L	4

Add 25mm to external width for hinges, Add 55mm to external depth for handle and electronic lock options



Eurovault Atlas Grade 7

Cash Rating
£250,000

Jewellery Rating
£2,500,000



- The highest security rated safe available in Europe
- Independently tested and certified to EN1143-1 Grade 7 by SBSC
- Insurance approved by the AiS
- Built to a Police Preferred Specification - Secured by Design
- Dual locking as standard - combination of key and/or electronic as required
- Option of left hand hinge additional lead time and costs apply
- Height adjustable shelving
- Base fixing

Locking Options

Dual Locking

Pin

Biometric

Dial

Any lock alterations must conform to EN1300 Class C.

Model	External (HxWxD)	Internal (HxWxD)	Weight	Volume	Shelves
Size 1	1150 x 760 x 730	900 x 500 x 400	1650kg	180L	2
Size 2	1450 x 760 x 730	1200 x 500 x 400	1950kg	240L	2
Size 3	1750 x 760 x 730	1500 x 500 x 400	2350kg	300L	4

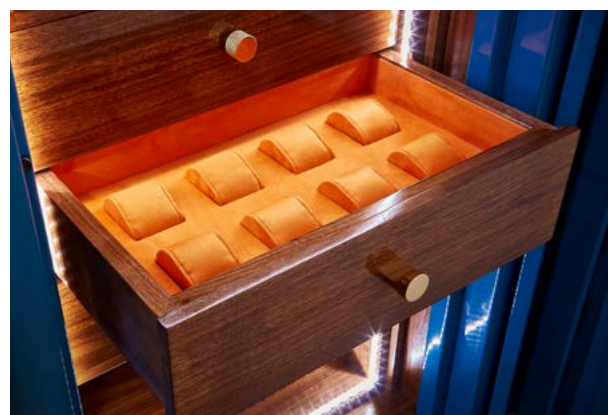
Add 25mm to external width for hinges, Add 55mm to external depth for handle and electronic lock options



THE LUXURY RANGE

FROM BURTON SAFES

AS BESPOKE AS YOUR INDIVIDUAL NEEDS



We offer a unique experience with over 30 safe sizes available. They are handcrafted in Yorkshire, UK. Our bespoke safes are finished to the highest standard. Our team of expert craftsmen and women provide luxurious, bespoke solutions. We can meet almost any requirement. Including handmade jewellery drawers and hand crafted upholstery. We use only the finest suede and leather.



We understand that each project is different. Which is why we build a security solution bespoke to each client. From matching colour swatches from your favourite car. To hand-stitching your family crest into the interior. We can ensure your safe is the only one of it's kind in the world.

The Eurovault LX range is available in a variety of sizes with security grades ranging from EN1143-1 Grade 1 up to Grade 7. Other options in the range are glass fronted display cabinets and gun safes.

- Jewellery and valuables cover from £100,000 to £2,500,000
- Over 30 safe sizes available
- We can offer luxury security doors and panic rooms installed to meet you and your home's security needs
- Full design, consultancy and installation provided by the Burton Safes Luxury Team



When you place an order you will be assigned a project manager. They will oversee the process from design to build, to the final installation. With over 30 years experience of providing security solutions globally we have built a reputation of integrity and customer satisfaction and helped keep homes and families safe for decades.

AN EXCLUSIVE RANGE OF EXQUISITE SAFES USING THE FINEST MATERIALS. ALL HAND FINISHED USING THE BEST BRITISH CRAFTSMANSHIP TO GIVE THE SAFE YOUR PERSONAL TOUCH.



The Luxury Range | from Burton Safes

www.luxurysafe.co.uk | theluxuryrange@burtonsafes.co.uk | +44 (0) 1484 663388

SAFE LOCKS

Burton Safes work with all of the world's major safe lock manufacturers to bring you a wide choice in locking solutions and access control for your safes and vaults.

Below are some of the more popular models but please enquire if you have a specific need and we will find a lock to suit your needs and budgets.

We have strategic partnerships with **Insys** and **Kaba**, ensuring that we can provide solutions for the most demanding of commercial environments - CvIT, banking and large retail estates.

CONTACT OUR COMMERCIAL
TEAM FOR MORE INFORMATION



enquiries@burtonsafes.co.uk
+44 (0) 1484 663388

Descriptions of the safe lock terminology can be found on page 55.

What Burton Safes recommend												
TYPES OF CODES	No. of User Codes	1	1	10	10	18	36	9	9*	99	99	95
	No. of Manager Codes	1	1			2	4	1		1	1	Multiple levels
	No. of Master Codes			1	1	1	1	1	1	2 or 3	2	Multiple levels
	Dual User			YES	YES	YES	YES	YES	YES	YES	YES	YES
	Courier Code					YES	YES	YES	YES	YES	YES	
	Duress Code					YES	YES	YES	YES	YES	YES	YES
LOCK FEATURES	One Time Code									YES	YES	
	Time Delay	YES	YES	YES	YES	YES	YES	YES	YES	YES	YES	YES
	Time Lock			YES	YES	YES	YES	YES	YES	YES	YES	YES
	Audit Trail			YES	YES	YES	YES	YES	YES	YES	YES	YES
MECHANICAL FEATURES	Biometric Option			YES	YES	via I/O box	via I/O box				YES	via I/O box
	Remote Programming											
	I/O box					YES	YES		YES	YES	YES	YES
	Redundant System									YES	YES	YES
TYPE OF LOCKING	Multi Lock Option										YES	YES
	Swing Bolt	YES	YES		YES			YES			YES	
	Dead Bolt	YES	YES					YES	YES	YES	YES	
Lock Grade		B	B	B	B	B	B	B	B	B	B/C/D	B/C/D

Kaba Connect user details are per lock.

*Optional upgrade to 50 users on request

Locking

At Burton Safes we have a huge range of locking options.

See page 52 for full details on our recommended models.

With the original design concept of being 'Easy to use' the KABA Axessor USB delivers a huge range of functions, via a simple visual input unit. One interesting feature is the DURESS function. This facility enables the lock to be connected to an alarm system, activating a silent signal to a remote monitoring station or to the Police when the user is under 'duress' by entering a slightly different code – this can also trigger a time delay if programmed.



Kaba Axessor USB

- Duress Code
- 18 Users
- Time Delay
- Time Lock Periods
- Battery Powered
- Clear Display
- Dual / 4 Eye Function
- Audit Trail of 10,000 events
- Alarm Connection
- Wrong Try Lockout (4 false attempts)
- Tamper Function
- Holiday Periods

The KABA Axessor USB is one of the most efficient and reliable locks on the market – suitable for domestic and commercial use, contact the office for a full description and to discuss your locking needs.

Insys flex ID

A flexible locking system for security containers like gun cabinets, safes, secure cabinets or entry and access doors. Access takes place contactless via RFID card or RFID tag. Stand alone or with a state of the art software system, Elocomm, for programming, control and audit. The Flex brings full access control functionality to your secure storage needs.

- High-quality motor lock and compact RFID reader unit
- Easy, quick opening via RFID card/RFID tag
- Easy enrolment of additional users without configuration software and keypad
- Adding of up to 99 additional cards/tags possible
- Manipulation blocking and automatic locking
- Emergency power supply
- Time delay, dual code and external release/blocking (only EloStar® flexID multi)



Safe Lock Terminology

Users – Unique individual's code that can be controlled by a "Master" or "Manager".

Dual user – If Dual user mode is set in your safe it will require two different user codes to open the lock. This means two people will need to be with the safe to open it, this helps prevent internal fraud.

Courier Code – Courier codes are generally used by CViT (cash and valuables in transit) to bypass any time delay settings within the safe and sometimes the time windows.

Duress Code – A duress code is a covert distress signal. When you input the code, a silent alarm will be sent to the Police or a monitoring station in the event that you are forced to open your safe.

The Duress code can still open the lock to the safe.

One Time Code – OTC (one-time code) is a code that can be created and passed to a user to open the safe – once they have used that code it will become invalid. These are often used by CViT (cash and valuables in transit) operators.

Time Delay – A time-delay is a setting that delays the unlocking of the lock by a user-definable period. After entering your code you wait the set time before you enter your code a second time to open the safe.

Time Lock – Weekly programmable timer installed inside, which allows the user to set time intervals that control when the safe opens – i.e. you can open the safe in-between 9am and 5pm but not outside of those hours even if you know the code.

Audit Trail – This logs every event within the safe – Which user opened and closed the safe, at what time. It will never show the code, just the user number i.e. User 2 opened the safe at 2:30pm 30/08/2018.

Biometric Option – Finger print controlled security lock. These locks come with the option of finger print access, code access or both.

Swing Bolt – Once a correct code is entered, the lock is released, allowing the boltwork to move when turning the handle.

Dead Bolt – Once a correct code is entered, the user has to manually move the locking bolt, usually by turning the keypad.

Motorised Bolt – Once a correct code is entered, the lock moves the locking bolt via an electronic motor.



IF IT MATTERS TO YOU, SECURE IT WITH US...



www.burtonsafes.co.uk | +44 (0) 1484 663388 | enquiries@burtonsafes.co.uk
Brockholes Business Park, Rock Mill Road, Holmfirth, HD9 7BN